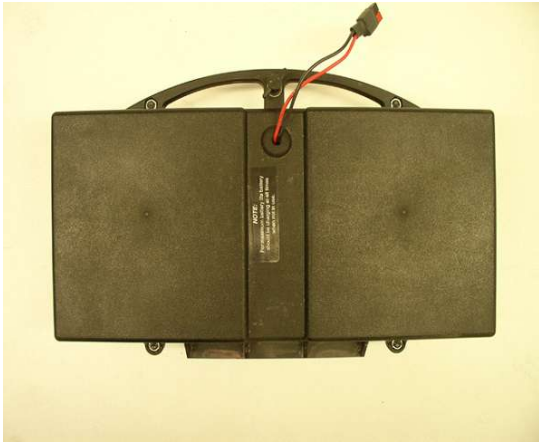
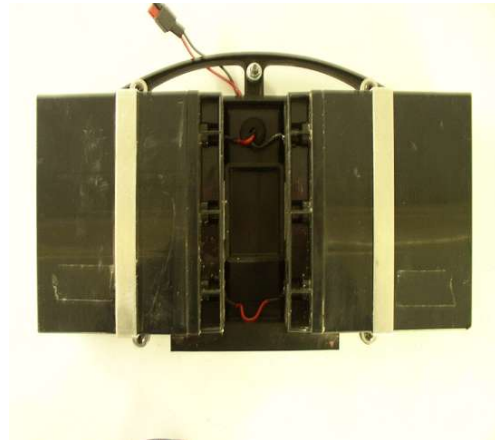


BATTERY REPLACEMENT/ 24 VOLT PACK



OVERVIEW - TOP



OVERVIEW - BOTTOM

STEP 1: Position the battery pack as shown in figure 1.(See **Fig 1**) Remove the four (4) 5/32" hex screws securing the battery straps.(See **Fig 2**)



Figure 1

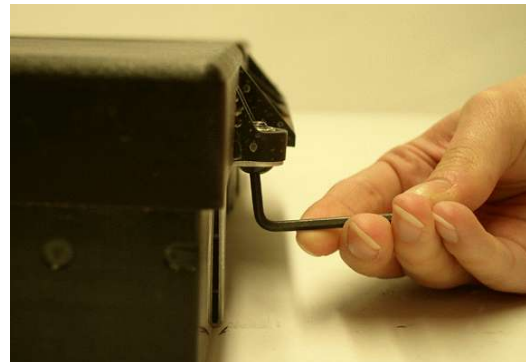


Figure 2

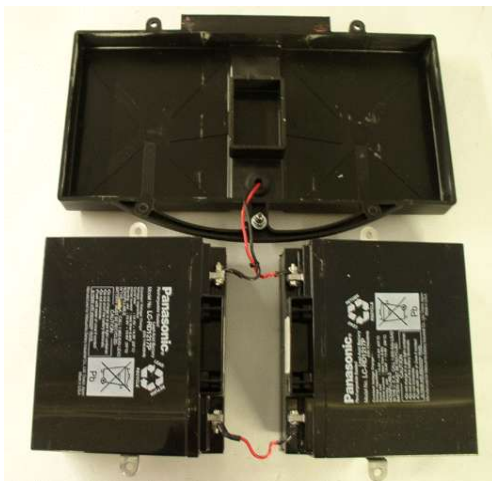


Figure 3

STEP 2: Lift the battery tray off the batteries.(See **Fig 3**)

STEP 3: Using two (2) 5/16" wrenches, remove the jumper wire from the battery terminals. If you are replacing the wire harness, discard the jumper wire and use the new supplied fuse wire. If you are only replacing the batteries then keep the wire to reuse later. (See Fig 4-5) **CAUTION: DO NOT LET WRENCH(S) MAKE CONTACT BETWEEN ANY TWO BATTERY TERMINALS. ACCIDENTAL CONTACT COULD RESULT IN SPARKS, FIRE, OR BURNS!!**

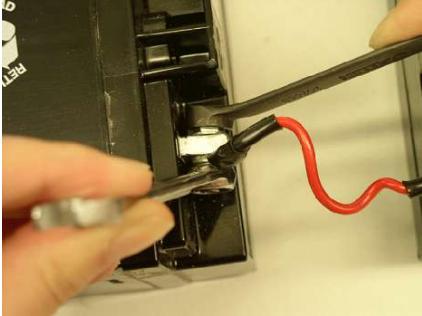


Figure 4

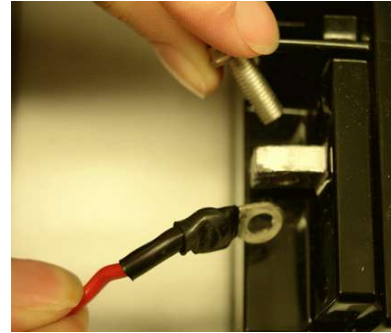


Figure 5

STEP 4 : Disconnect the battery harness. (See Fig 6-7) Flip the batteries over and remove the battery straps. (See Fig 8) Properly dispose of the old batteries.

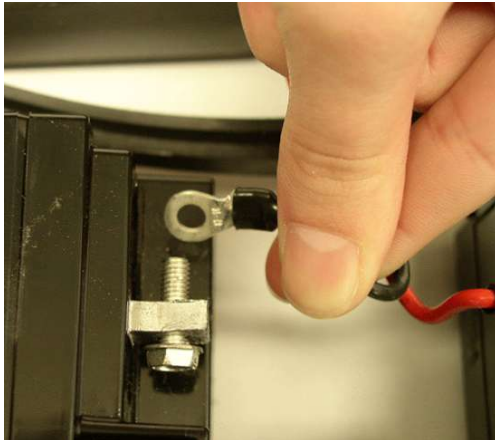


Figure 6

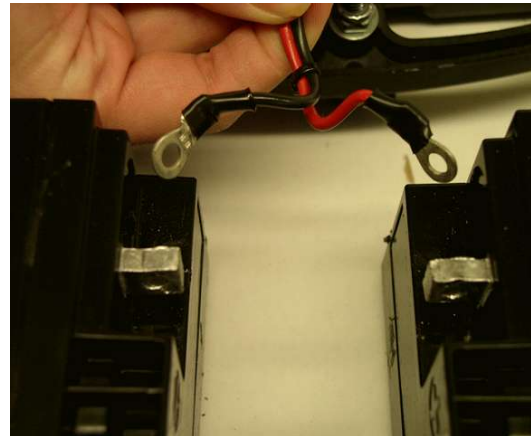


Figure 7

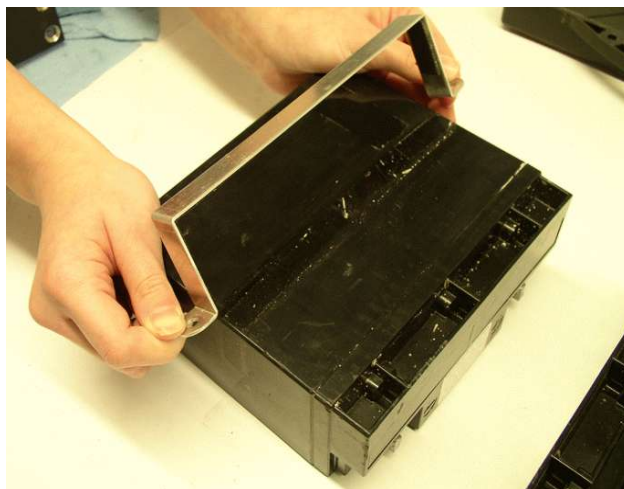


Figure 8

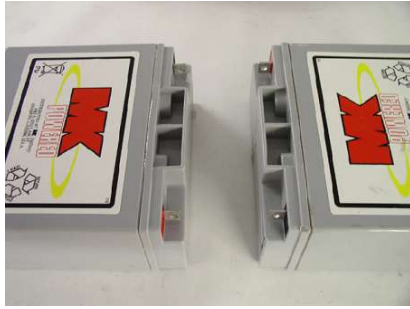


Figure 9

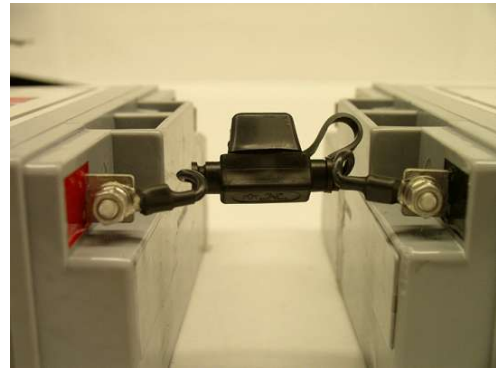


Figure 10

STEP 5: Lay the new batteries out so that the battery terminals are up and facing each other about 2 1/4" apart. (See Fig 9) Install the new fuse link wire(if supplied) in place of the jumper wire.(See Fig 10) If you are reusing the jumper wire make sure that you clean the terminals with steel wool before reattaching it. Note the direction of the bolt going through the battery terminal. The proper assembly order is the bolt, fuse terminal wire, flat washer, lock washer, and the nut.(See Fig 11-13) Note the direction of the wire to the terminal. This is important for clearance purposes.

BOLTS CONNECTING WIRES TO BATTERY TERMINALS MUST BE TIGHTENED SECURELY TO ENSURE A GOOD ELECTRICAL CONNECTION!!

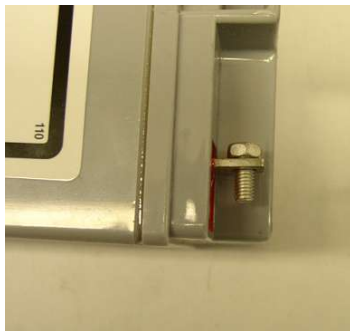


Figure 11

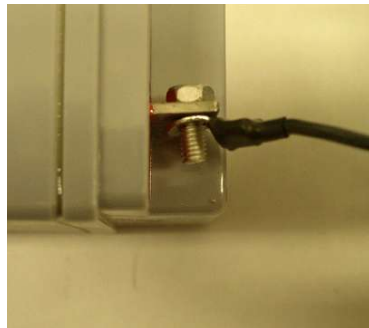


Figure 12

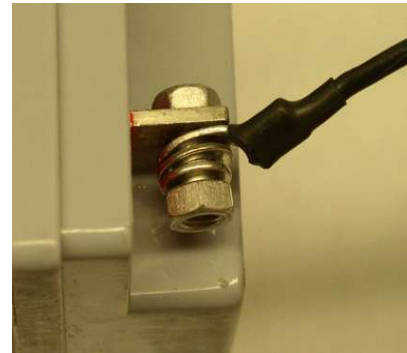


Figure 13

STEP 6: Clean the terminals on the wire harness using steel wool or fine emery cloth.(See Fig.14) Clean terminals, and a tight connection, will provide the maximum flow of current, ensuring maximum performance and life from your new batteries. Attach the wire harness to the batteries.(See Fig 15) **IMPORTANT: RED-POSITIVE WIRE AND BLACK- NEGATIVE WIRE MUST ATTACH TO THE CORRESPONDING BATTERY TERMINALS AS SHOWN.(See Fig 16)**

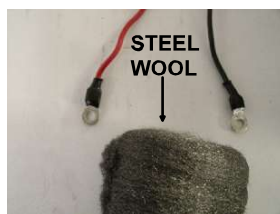


Figure 14

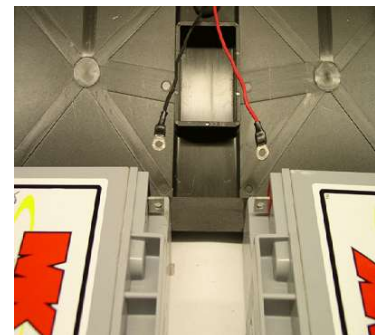


Figure 15

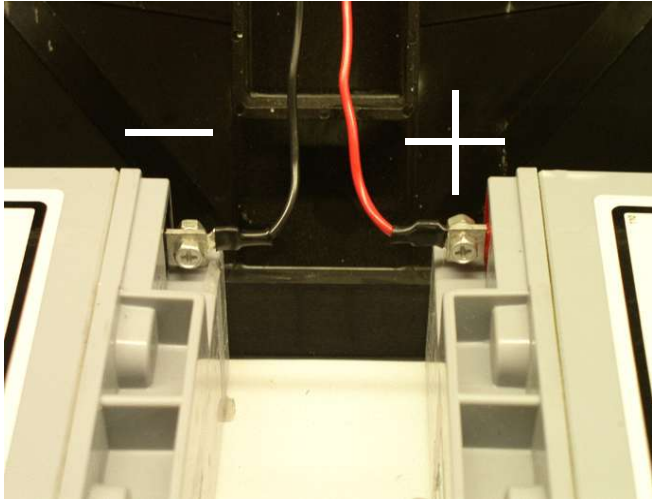


Figure 16

STEP 7: Lay the battery tray over the batteries.(See Fig 17) Position the batteries until they are properly aligned in the tray. Holding onto the batteries in the tray, carefully flip the batteries/tray over.(See Fig 18) Reinstall the battery straps.(See Fig 19) Make sure that when you install the locknuts to have the flat side of the nut facing up when installed in the battery tray.(See Fig 20) Double check the orientation of the wires. Installation is complete.

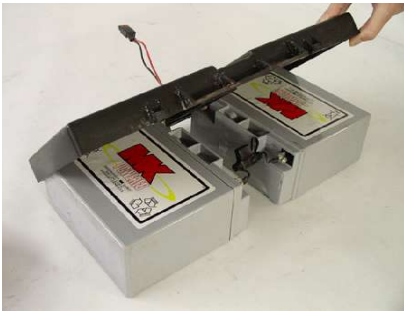


Figure 17

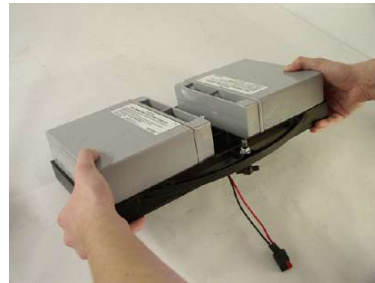


Figure 18



Figure 19



Figure 20

