

## BELT ADJUSTMENT:



**OVERVIEW**

STEP 1: Remove the nine (9) screws securing the outer drive case cover and remove. Only loosen the 5/32" hex screw with the brass washer located to the left of the brass motor pulley (See Fig 1). This will allow the belt tensioner to drop down. Remove the 1<sup>st</sup> stage belt (See Fig 2).



**Figure 1**



**Figure 2**

STEP 2: From the backside of the inner drive case remove the plastic nut cap. (See Fig 3) Only loosen the nut using a 1/2" wrench that secures the intermediate pulley.(See Fig 4)

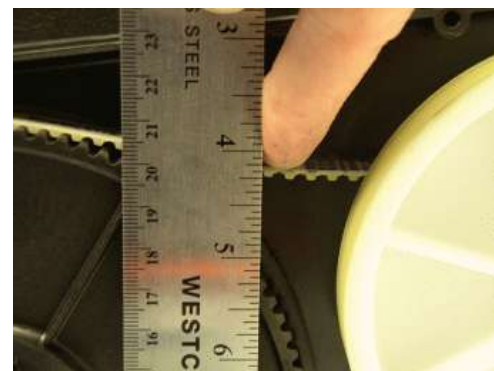


**Figure 3**



**Figure 4**

STEP 4: Slide the intermediate pulley to the right to tighten the belt. Tighten the intermediate pulley nut and check for the proper tension by laying a ruler next to the belt in the middle of the top span. Press down lightly with your finger. The belt should deflect approximately 1/4" down (See Fig 5). Loosen and readjust the intermediate pulley if further adjustment is needed. Tighten the intermediate pulley nut securely and install the nut cap.



**Figure 5**

STEP 5: Reinstall the 1<sup>st</sup> stage belt. (See Fig 6) Press up on the belt tensioner roller and tighten the screw. (See Fig 7) The belt should be snug but do not over tighten as it will cause undo stress on the motor shaft.



**Figure 6**



**Figure 7**