

## SHEAR PIN REPLACEMENT

STEP 1: Remove the nine (9) screws securing the outer drive case cover.(See Fig 1)



Figure 1



Figure 2

STEP 2: Remove the 3/4" nut, washer and belt retainer plate (if applicable) securing the final drive pulley.(See Fig 2)  
Discard the nut, washer and retainer plate.

STEP 3: Remove the 2<sup>nd</sup> stage belt using a large flat blade screwdriver. Gently work the belt off of the final drive pulley.(See Fig 3)



Figure 3

STEP 4: Using a plastic or rubber hammer, strike the end of the axle until the final drive pulley starts to come off.(See Fig 4) Continue striking the axle until the pulley comes into contact with the axle threads. Finish removing the pulley by pulling and spinning it counter clockwise.(See Fig 5) If a



Figure 5



Figure 4

rubber or plastic hammer is not available you can substitute with a metal hammer and a block of wood.(See Fig 6) DO NOT strike the axle directly with a metal hammer as damage to the threads will occur.



Figure 6

STEP 5: Check the slot in the back of the final drive pulley. (See **Example**) Remove the broken pieces of shear pin, if needed. Look for any damage, such as cracks or chips. If the pulley is damaged it must be replaced.



**Example of an Undamaged Pulley**



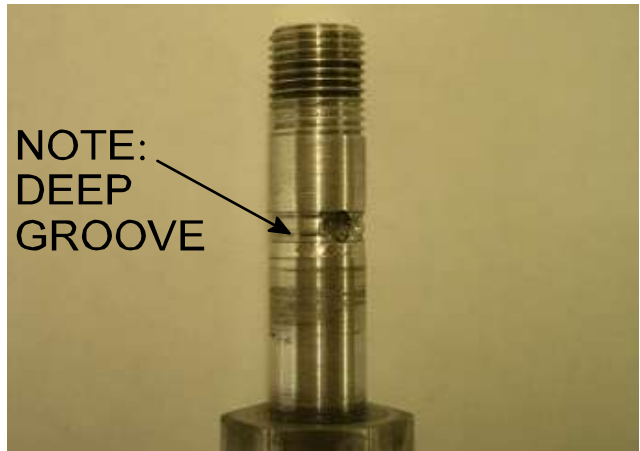
**Figure 7**

STEP 6: Remove the old shear pin from the axle using a punch (a small nail or a screw may work). Using the new shear pin as a guide, make sure that the diameter of the punch you are using is smaller than the diameter of the shear pin. (See **Fig 7**) Check the axle for any damage. The hole through the axle must not be out of round. If the axle is grooved, it must not be deeper than 1/16". (See **Fig 8**) Replace the axle if it is damaged. Call customer service for directions.

STEP 7: Tap in the new shear pin until equal lengths are protruding from the axle. Make sure the washer is in place behind the pin first. (See **Fig 9**)



**Figure 9**



**Figure 8**

STEP 8: Reinstall the final drive pulley. Rotate until the shear pin engages the slot in the back of the pulley. (See **Fig 10**)



**Figure 10**



STEP 9: Install the new flange nut. Tighten securely - nut must be tight.(See Fig 11)

**Figure 11**

STEP 10: Reinstall the 2<sup>nd</sup> stage belt. Rotate the rear wheel until the belt slides on.(See Fig 12)  
Block up the rear drive wheel and run the cart to make sure that the drive system is working properly. Reinstall the outer drive case cover.



**Figure 12**